

The Premium Oilfield Technologies Mud Gate Valve uses M2M™ sealing technology. This technology allows our valve to be one of the longest lasting valves in the industry and is used in applications up to 7500 psi. Unlike conventional mud valves with rubber seats that wash out quickly, the NV-7500 uses single piece seat rings creating an upstream metal to metal seal. This upstream design helps eliminate debris contamination into the valve body and reduces wear on internal components.

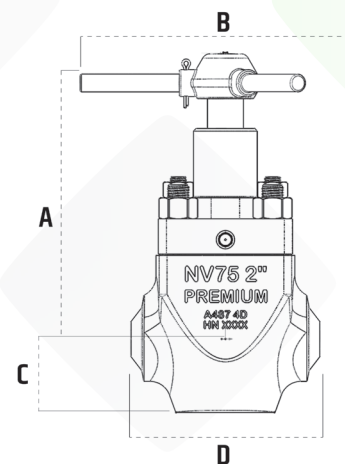
## BENEFITS

- ◆ Single piece seat
- ◆ Metal to metal sealing
- ◆ Reduced wash-outs: Upstream sealing reduces solids in valve cavity
- ◆ High performance urethane stem packing
- ◆ Stainless steel stem, gate and seats. Forged bonnet
- ◆ Certs available up to API PSL-2

## APPLICATIONS

- ◆ 7500 psi mud systems
- ◆ Standpipe manifolds
- ◆ MPD manifolds
- ◆ Bleed lines
- ◆ 2" full bore, 1502, butt-weld or flanged

| Dim | 2" XXH | 2" Flanged | 2" 1502 (integral) | 2" 1502 (compact) |
|-----|--------|------------|--------------------|-------------------|
| A   | 13.690 | 13.690     | 13.690             | 13.690            |
| B   | 12.380 | 12.380     | 12.380             | 12.380            |
| C   | 3.500  | 3.500      | 3.500              | 3.500             |
| D   | 9.000  | 20.500     | 15.720             | 14.720            |

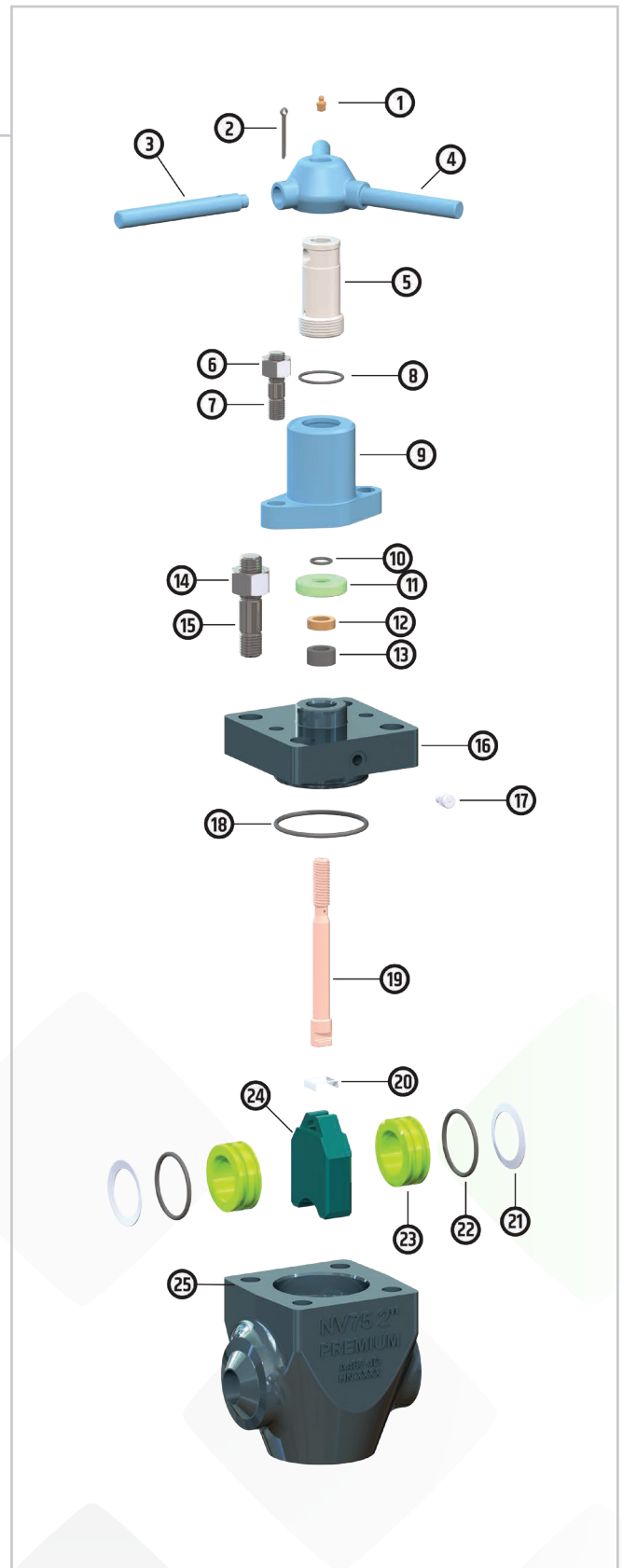


# 2" NV-7500 MUD GATE VALVE

with Proprietary M2M™ Seat Technology

| Item # | Part #          | Kit | Description                           |
|--------|-----------------|-----|---------------------------------------|
|        | 501-6350        |     | Assembly-Weld End                     |
|        | 501-6360        |     | Assembly-Flange Ends                  |
|        | 501-6363        |     | Assembly-Int 1502                     |
|        | 501-6362        |     | Assembly-Weld 1502                    |
|        | 501-6364        |     | Assembly 1502 (compact)               |
|        | 501-6330        |     | Repair Kit-Minor, Includes Y          |
|        | 501-6340        |     | Repair Kit-Major, Includes X          |
| 1      | 601-0009        |     | Grease Fitting, 1/8 NPT               |
| 2      | 601-0037        |     | Cotter Pin                            |
| 3      | 501-0240        |     | Handle Lock                           |
| 4      | 501-0230        |     | Handle                                |
| 5      | 501-0250        | X   | Stem Screw, 1040                      |
| 6      | 210-009         |     | Nut, .750-10UNC                       |
| 7      | 501-0410        |     | Stud, .750-10UNC X 3.000LG            |
| 8      | 3N7-2224        | X   | Screw Housing Seal, 2-224 NBR         |
| 9      | 501-0270        |     | Screw Housing, 1040                   |
| 10     | 3H9-2210        | X   | Secondary Seal, 2-210 HNBR            |
| 11     | 501-0300        |     | Packing Retainer, 410SS               |
| 12     | 501-0311        | X   | Stem Bushing, AL-BR                   |
| 13     | 601-0282        | X   | Stem Seal Packing, Urethane PolyPak   |
|        | 501-0312 [ALT.] | X   | Stem Seal Packing, HNBR               |
| 14     | 210-013         |     | Nut, 1.000-8UNC                       |
| 15     | 501-0430        |     | Stud, 1.000-8UNC X 4.500LG            |
| 16     | 501-6375        |     | Bonnet, A487 4D, w/ Port              |
| 17     | 601-0220        |     | Grease Fitting, 1/4" NPT, Button Head |
| 18     | 3H9-2343        | XY  | Bonnet Seal, 2-343 HNBR               |
| 19     | 501-6374        | X   | Stem, 410SS QPQ                       |
| 20     | 501-0320        | XY  | Gate Clip, SS                         |
| 21     | 501-6373        | XY  | Seat Belleville, 17-4PH               |
| 22     | 3H9-2334        | XY  | Seat Seal, 2-334 HNBR                 |
| 23     | 501-6372        | XY  | Seat, 410SS TC                        |
| 24     | 501-6371        | XY  | Gate, 410SS TC                        |
| 25     | 501-6388        |     | Body, Int 1502 Ends, A487 4D          |
|        | 501-6380        |     | Body, Weld Ends, A487 4D              |
|        | 501-6382        |     | Body, Flange Ends, A487 4D            |
| *      | 503-0107        |     | 1502 Union Seal 2" Kemper             |
| *      | 503-0116        |     | Retaining Ring, WS-331                |
| *      | 503-0130        |     | Segments, 1502 Union 2"               |
| *      | 503-0131        |     | Nut, 1502 Union 2"                    |

\*not shown



## Premium Oilfield Technologies

5727 Brittmoore Road ♦ Houston, TX 77041

281.670.5200 MAIN ♦ 281.670.5229 FAX

[premiumoilfield.com](http://premiumoilfield.com)

Premium Oilfield  
Technologies  
Q1-3977

